

Market Mood



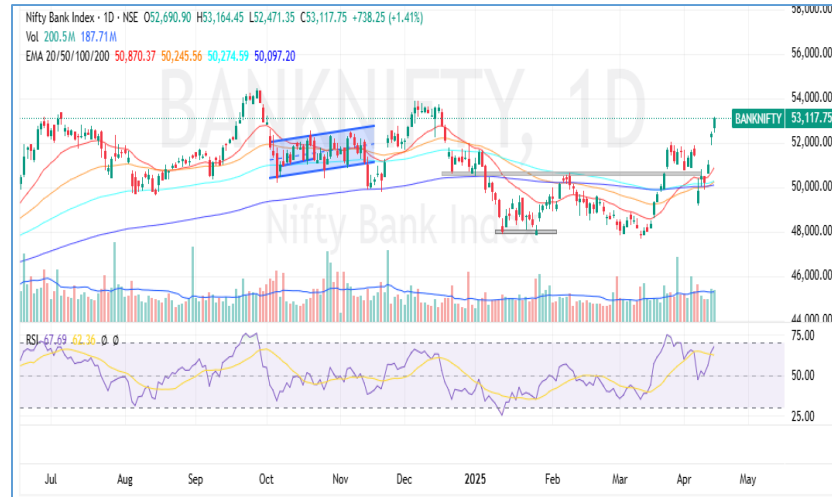
17th April 2025

Market Mood



LTP	23437.20
R1	23500
R2	23800
S1	23300
S2	23000

- Nifty opened flat today at 23,344.10 and remained range-bound for most of the session, trading within a 100-point band between 23,280 and 23,370. However, in the final one and a half hours, it broke out of this consolidation phase, rallying up to an intraday high of 23,452.20, before closing at 23,437.20, marking a gain of 0.47%.
- On the daily chart, Nifty formed a bullish candlestick pattern, closing above both its 100-day and 200-day EMAs, signaling strength. Momentum indicators also support the bullish bias, with the RSI at 57.44, indicating continued upward momentum.
- As long as Nifty holds above 23,300, the outlook remains positive. On the upside, traders should watch out for resistance levels at 23,500 and 23,800, while 23,300 and 23,000 will act as key support zones.



LTP	53117.75
R1	53600
R2	54000
S1	52500
S2	52000

- Bank Nifty opened with a strong gap-up of nearly 300 points at 52,690.90 and maintained a steady uptrend throughout the session. It consistently took support at the 20 EMA on the 5-minute chart, reflecting intraday strength, and ended the day at 53,117.75, posting a solid gain of 1.41%.
- On the daily timeframe, it formed a large bullish candlestick, signaling strong positive sentiment in the market. Momentum indicators further confirm this strength, with the RSI at 67.69, supporting the ongoing upward move.
- The outlook remains bullish as long as Bank Nifty stays above 52,500. On the upside, immediate resistance is seen at 53,600, followed by 54,000, while support levels to watch are 52,500 and 52,000 on the downside.

Global Market:

	Dow Jones Futures <small>CFD</small>	39,896.54	228.15	0.58
	17 Apr, 2025 09:13 IST			
	S&P 500 <small>CFD</small>	5,275.70	-120.93	-2.24
	17 Apr, 2025 01:29 IST			
	Nasdaq <small>CFD</small>	16,307.16	-516.01	-3.07
	17 Apr, 2025 01:29 IST			
	FTSE	8,275.60	26.48	0.32
	16 Apr, 2025 21:20 IST			
	CAC	7,329.97	-5.43	-0.07
	16 Apr, 2025 21:20 IST			
	DAX	21,311.02	57.32	0.27
	16 Apr, 2025 21:45 IST			

Sentiment Gauge



Sideways to Positive

FII - DII Activities:

Activity	FII (Cr)	DII (Cr)
Cash	3936.42	-2512.77
Adv/Dec		
Advance	Decline	A/D Ratio
213	9	23.67



Results Calendar

Date	RESULTS	Expected	Previous
17 th Apr 25	INFOSYS	-	-
17 th Apr 25	HDFCLIFE	-	-

17th April 2025

Market Mood

CALL OF THE DAY



ARVIND (Intraday pick)

Buy above : 365 SL : 359.5 TGT : 376

Arvind Ltd. has successfully broken out of a descending triangle pattern on the daily timeframe, marked by a strong bullish candle and volume exceeding the 20-day average. This breakout signals renewed bullish sentiment and potential for further upside. Technically, the stock is trading above its 20, 50, 100, and 200-day EMAs, confirming a strong bullish trend. Additionally, the Relative Strength Index (RSI) is at 62.86 and trending higher, indicating strengthening momentum and supporting the bullish outlook for the stock.

DELIVERY CALL



INDIANB (Delivery pick)

Buy range : 568/ 570 SL : 552 (daily closing basis) TGT : 603

Indian Bank has successfully broken out of a flag pattern on the daily timeframe, along with a breakout above key resistance levels following a period of consolidation. The move was accompanied by a strong bullish candle and ultra-high volume, significantly above the 20-day average, signaling strong bullish intent. Technically, the stock is trading above its 20, 50, 100, and 200-day EMAs, confirming a sustained uptrend. The Relative Strength Index (RSI) stands at 62.40 and is trending upward, indicating positive momentum and further supporting the bullish outlook for the stock.

17th April 2025

Market Mood



Nifty 50 Snapshot

Script	LTP	CHNG	%CHNG	R1	R2	S1	S2
NIFTY 50	23,437.20	108.65	0.47	23,550	23662.1	23,324.75	23,212.30
INDUSINDBK	785.5	49.6	6.74	828	871.0859	742.71	699.91
AXISBANK	1,161.00	48.2	4.33	1,197	1233.591	1,124.70	1,088.41
ONGC	240.84	8.15	3.5	248	255.355	233.58	226.33
TRENT	5,042.00	165	3.38	5,174	5305.489	4,910.26	4,778.51
ADANIPTS	1,235.50	24.7	2.04	1,257	1279.364	1,213.57	1,191.64
HDFCLIFE	717	12.3	1.75	732	747.1542	701.92	686.85
ASIANPAINT	2,456.00	40.3	1.67	2,502	2547.916	2,410.04	2,364.08
JIOFIN	242.3	3.73	1.56	246	249.3597	238.77	235.24
APOLLOHOSP	7,010.00	105	1.52	7,129	7247.819	6,891.09	6,772.18
WIPRO	247.6	3.6	1.48	252	256.5936	243.10	238.61
EICHERMOT	5,600.00	71	1.28	5,669	5738.68	5,530.66	5,461.32
BHARTIARTL	1,821.00	22.2	1.23	1,843	1864.317	1,799.34	1,777.68
COALINDIA	399.8	4.55	1.15	405	409.2841	395.06	390.32
SBIN	772.15	8.65	1.13	782	791.0084	762.72	753.29
CIPLA	1,498.00	16.2	1.09	1,522	1545.724	1,474.14	1,450.28
ITC	424.9	4.5	1.07	431	436.2923	419.20	413.51
TCS	3,274.00	25.8	0.79	3,304	3334.845	3,243.58	3,213.16
NESTLEIND	2,382.00	14.1	0.6	2,413	2443.735	2,351.13	2,320.26
HDFCBANK	1,875.90	11	0.59	1,894	1912.841	1,857.43	1,838.96
ICICIBANK	1,358.00	7.8	0.58	1,369	1380.552	1,346.72	1,335.45
HCLTECH	1,434.00	7.5	0.53	1,454	1474.037	1,413.98	1,393.96
TATASTEEL	137.1	0.69	0.51	139	140.7865	135.26	133.41
TECHM	1,308.10	6.4	0.49	1,328	1348.181	1,288.06	1,268.02
SHRIRAMFIN	675	3	0.45	685	694.4053	665.30	655.59

17th April 2025

Market Mood



Script	LTP	CHNG	%CHNG	R1	R2	S1	S2
POWERGRID	305.5	0.95	0.31	308	310.6918	302.90	300.31
TATACONSUM	1,106.00	2.6	0.24	1,121	1135.407	1,091.30	1,076.59
JSWSTEEL	1,010.10	2.1	0.21	1,025	1039.114	995.59	981.09
ULTRACEMCO	11,741.00	22	0.19	11,854	11967.28	11,627.86	11,514.72
BEL	294.1	0.4	0.14	297	299.0891	291.61	289.11
HINDUNILVR	2,364.50	3	0.13	2,382	2400.004	2,346.75	2,329.00
SBILIFE	1,564.50	1.9	0.12	1,585	1605.13	1,544.19	1,523.87
KOTAKBANK	2,121.60	1.4	0.07	2,147	2173.155	2,095.82	2,070.04
BAJAJFINSV	1,968.50	0.5	0.03	1,985	2001.75	1,951.87	1,935.25
GRASIM	2,715.80	-2.8	-0.1	2,746	2775.946	2,685.73	2,655.65
TITAN	3,269.70	-3.7	-0.11	3,299	3327.795	3,240.65	3,211.61
RELIANCE	1,238.00	-2.1	-0.17	1,246	1254.742	1,229.63	1,221.26
ETERNAL	221.85	-0.38	-0.17	225	227.6441	218.95	216.06
ADANIENT	2,414.10	-4.1	-0.17	2,444	2473.999	2,384.15	2,354.20
DRREDDY	1,150.90	-4	-0.35	1,162	1173.329	1,139.69	1,128.47
HEROMOTOCO	3,790.00	-13.9	-0.37	3,841	3892.947	3,738.53	3,687.05
M&M	2,632.20	-13.8	-0.52	2,664	2695.063	2,600.77	2,569.34
BAJAJ-AUTO	7,947.00	-48.5	-0.61	8,047	8147.321	7,846.84	7,746.68
LT	3,231.40	-26.2	-0.8	3,267	3301.623	3,196.29	3,161.18
SUNPHARMA	1,691.00	-14	-0.82	1,707	1722.971	1,675.01	1,659.03
BAJFINANCE	9,065.00	-76	-0.83	9,209	9352.596	8,921.20	8,777.40
NTPC	359.35	-3.15	-0.87	363	366.5349	355.76	352.17
INFY	1,412.20	-13.8	-0.97	1,434	1456.358	1,390.12	1,368.04
TATAMOTORS	616.1	-6.1	-0.98	624	632.2917	608.00	599.91
HINDALCO	609.65	-7.95	-1.29	622	634.2977	597.33	585.00
MARUTI	11,665.00	-190	-1.6	11,815	11964.44	11,515.28	11,365.56
TRENT	5,740.00	-395.1	-6.44				

HARSHITA DARAK
Technical Research Analyst

Disclosure: M/s. Bonanza Portfolio Ltd here by declares that views expressed in this report accurately reflect view point with subject to companies/securities. M/s. Bonanza Portfolio Ltd has taken reasonable care to achieve and maintain independence and objectivity in making any recommendations. The Analysts engaged in preparation of this Report or his/her relative: - (a) do not have any financial interests in the subject company mentioned in this Report; (b) do not own 1% or more of the equity securities of the subject company mentioned in the report as of the last day of the month preceding the publication of the research report; (c) do not have any material conflict of interest at the time of publication of the Report. The Analysts engaged in preparation of this Report:- (a) have not received any compensation from the subject company in the past twelve months; (b) have not managed or co-managed public offering of securities for the subject company in the past twelve months; (c) have not received any compensation for investment banking or merchant banking or brokerage services from the subject company in the past twelve months; (d) have not received any compensation for products or services other than investment banking or merchant banking or brokerage services from the subject company in the past twelve months; (e) has not received any compensation or other benefits from the subject company or third party in connection with the Report; (f) has not served as an officer, director or employee of the subject company; (g) is not engaged in market making activity for the subject company.

M/s. Bonanza Portfolio Ltd is a registered Research Analyst under the regulation of SEBI, the year 2014. The Regn No. INH100001666 and research analyst engaged in preparing reports is qualified as per the regulation's provision.

Disclaimer: This research report has been published by M/s. Bonanza portfolio Ltd and is meant solely for use by the recipient and is not for circulation. This document is for information purposes only and information / opinions / views are not meant to serve as a professional investment guide for the readers. Reasonable care has been taken to ensure that information given at the time believed to be fair and correct and opinions based thereupon are reasonable, due to the nature of research it cannot be warranted or represented that it is accurate or complete and it should not be relied upon as such. If this report is inadvertently send or has reached to any individual, same may be ignored and brought to the attention of the sender. Preparation of this research report does not constitute a personal recommendation or take into account the particular investment objectives, financial situations, or needs of individual clients. Past performance is not a guide for future performance. This Report has been prepared on the basis of publicly available information, internally developed data and other sources believed by Bonanza portfolio Ltd to be reliable. This report should not be taken as the only base for any market transaction; however this data is representation of one of the support document among other market risk criterion. The market participant can have an idea of risk involved to use this information as the only source for any market related activity.

The distribution of this report in definite jurisdictions may be restricted by law, and persons in whose custody this report comes, should observe, any such restrictions. The revelation of interest statements integrated in this analysis are provided exclusively to improve & enhance the transparency and should not be treated as endorsement of the views expressed in the analysis. The price and value of the investments referred to in this report and the income from them may go down as well as up. Bonanza portfolio Ltd or its directors, employees, affiliates or representatives do not assume any responsibility for, or warrant the accuracy, completeness, adequacy and reliability of such information / opinions / views.

While due care has been taken to ensure that the disclosures and opinions given are fair and reasonable, none of the directors, employees, affiliates or representatives of M/s. Bonanza portfolio Ltd shall be liable. Research report may differ between M/s. Bonanza portfolio Ltd RAs and other companies on account of differences in, personal judgment and difference in time horizons for which recommendations are made. Research entity has not been engaged in market making activity for the subject company. Research analyst has not served as an officer, director or employee of the subject company. Research analyst has not received any compensation/benefits from the Subject Company or third party in connection with the research report.

Bonanza Portfolio Ltd. Bonanza House, Plot No. M-2, Cama Industrial Estate. Walbhat Road, Goregaon (E), Mumbai – 400063
Web site: <https://www.bonanzaonline.com> SEBI Regn. No.: INZ000212137 BSE CM: INB 011110237 | BSE F&O: INF 011110237 |
MSEI: INE 260637836 | CDSL: 120 33500 | NSDL: a) IN 301477 | b) IN 301688 (Delhi) PMS: INP 000000985 | AMFI: ARN -0186